

HLNA GEOGRAPHY

GEOGRAPHY

Parent Guide

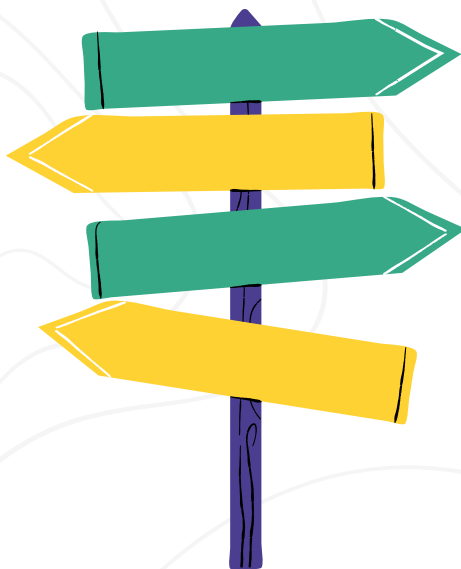


**HOW TO SUPPORT YOUR CHILD IN YEAR 7- AND
PREPARE FOR YEAR 8**

INTRODUCTION

Year 7 Geography helps students understand the world around them — from physical landscapes to global challenges and human environments. Students begin to think geographically: exploring places, processes, patterns and connections.

The foundations built this year will support greater independence and deeper thinking in Year 8.



Understanding

KEY LOCATIONS

A strong understanding of key locations and concepts helps students make sense of more complex ideas later.



You can help by:

- Asking what topic they are studying (e.g. rivers, weather, population, settlements)
- Testing them on key vocabulary from their knowledge organiser
- Looking at maps together and identifying continents, countries and major physical features
- Encouraging short, regular revision sessions

SIMPLE PROMPT:

“WHAT ARE THREE KEY FACTS YOU LEARNED THIS WEEK?”

ENCOURAGE

map skills

Geography involves strong spatial awareness.

Support your child by:

- Looking at atlases or online maps together
- Asking them to locate places mentioned in the news
- Discussing directions (north, south, east, west)
- Identifying human and physical features in your local area



Confidence with maps builds independence in lessons.

focus on the

WHY AND HOW

GEOGRAPHY IS ABOUT EXPLAINING PROCESSES AND CONNECTIONS.



INSTEAD OF ASKING:

“What did you learn?”

Try:

“Why does that happen?”

“How does that affect people?”

“What are the advantages and disadvantages?”

“How are these places similar or different?”

Encouraging explanation strengthens analytical writing skills.



support

EXTENDED WRITING



In Year 7, students begin writing longer explanations using evidence.



You can help by encouraging them to:

- Answer the full question
- Use key vocabulary accurately
- Include specific examples (case studies)
- Explain their reasoning clearly

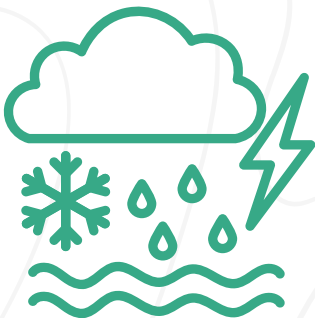
A helpful structure:

- Make a point
- Give an example of a place
- Explain why it matters (use our Geography key phrases- This means that, This leads to, This is because, As a result)



CONNECT GEOGRAPHY

to everyday life



You could:

- Discuss weather patterns and climate
- Talk about environmental issues in the news or watch nature documentaries
- Explore different countries and cultures
- Plan routes for journeys using maps
- Discuss how local areas have changed over time

These conversations build curiosity and real-world understanding.

GEOGRAPHY IS ALL AROUND US

Build strong

STUDY HABITS



Students who thrive in Year 8:

- Revise key vocabulary regularly (each booklet has a glossary at the start)
- Learn case study facts securely
- Organise notes clearly and catch up on missed work
- Act on feedback
- Take responsibility for independent study

Encourage:

- Weekly review of key knowledge
- Checking and correcting mistakes
- Pride in presentation

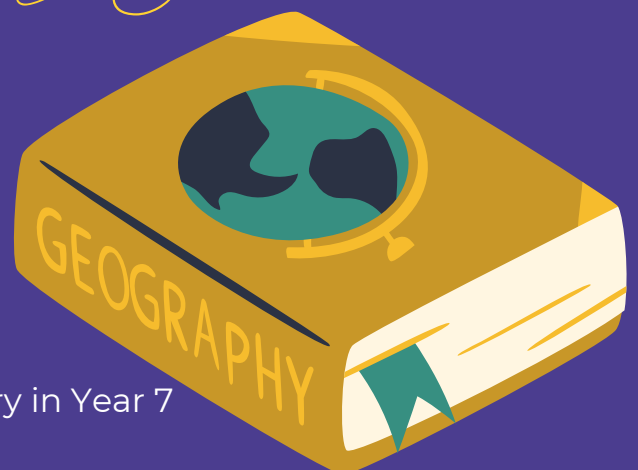
WHAT TO EXPECT

in year 8

In Year 8, students will:

- Study more complex geographical processes
- Compare countries and regions in more depth
- Analyse data and graphs
- Use case studies independently
- Write more developed explanations

A secure foundation of knowledge and vocabulary in Year 7 makes this progression much smoother.



A final message about

GEOGRAPHY

You do not need to be a Geography expert to support your child!

The most powerful things you can do are:

Show interest in what they are learning

Encourage discussion about the world

Support regular revision of key facts

Praise effort and resilience

Geography helps students understand their place in the world — and how they can shape its future.

